

the **fce** news

of Michigan

FOR AND ABOUT THE  
MICHIGAN ASSOCIATION FOR FAMILY & COMMUNITY  
EDUCATION



## OUR MISSION

*To strengthen individuals, families and communities through education,  
leadership, and action.*

Winter 2017



### FROM THE PRESIDENT

#### 2017 MAFCE Presidents Article

Our organization was founded many years ago to educate homemakers in many different areas of family life. I feel that our organization can still be a vital part of family life. It may be different with all the electronics available to young families but they still need our guidance. We do not have the Extension Home Economist coming to our homes or clubs anymore to teach us but we have so much to offer others that we need to share this knowledge. So at this time

I will share an experience about a brain disease called Lewy Body Disease. My father is up in age and was having what I thought was normal forgetfulness but one day he took Benadryl for what he thought was allergies (runny nose). He was rushed to the hospital and given medication for his severe anxiety. Well, that medication made him have hallucinations and many other problems and could have been life threatening. With many tests we found out he has Lewy Body Disease. I had never heard of this disease and many doctors have not either. Lewy Body Disease is not a rare disease. It affects an estimated 1.4 million individuals in the United States. Because LBD (Lewy Body Disease) resembles other more commonly known diseases like Alzheimer's and Parkinson's, it is currently widely underdiagnosed. While it may take more than a year or two for enough symptoms to develop for a doctor to diagnose LBD, it is critical to pursue a formal diagnosis. Early diagnosis allows for important early treatment and may extend quality of life and independence. In the early 1900's, while researching Parkinson's disease, the scientist Frederic H Lewy discovered abnormal protein deposits that disrupt the brain's normal functioning. These Lewy Body proteins are found in an area of the brain stem where they deplete the neurotransmitter dopamine, causing Parkinsonian symptoms. Scientists think that Lewy body disease might be related to Parkinson's and Alzheimer's, or that they sometimes happen together. It usually begins between the ages of 50 and 85. The disease gets worse over time. In Lewy Body Dementia, these abnormal proteins are diffused throughout many areas of the brain including the cerebral cortex. The brain chemical acetylcholine is depleted, causing disruption of perception, thinking and behavior. There is no cure but the treatment uses drugs to help the symptoms.

They can include:

- Progressive dementia (forgetting words, poor problem solving, difficulty with learning new skills and impaired decision making)
- Fluctuating cognition with pronounced variation in attention and alertness (episodes of confusion)
- Hallucinations (visual and other hallucinations that include sound, taste, smell and touch)
- Gait changes (shuffle or walk stiffly, body stiffness in the arms or legs, tremors may occur, blank stare, stooped posture, drooling, runny nose)
- REM sleep behavior disorder (playing out of their dreams while they are asleep, lots of movement and may talk in their sleep)
- Severe sensitivity to neuroleptics

**Sensitivity to neuroleptics occurs in up to 50% of LBD patients (these will decrease the cognition and increase the hallucination and lead to kidney failure). Neuroleptic Malignancy Syndrome, is a life-threatening illness and for this reason it is very important that the proper diagnosis is made and that healthcare providers are educated about the disease. A person with LBD should not take: Tranquilizers, surgical anesthetics, antidepressants, parkinsonian medication, certain over the counter medications including diphenhydramine (antihistamines: Theraflu, Triaminic, Unisom, Benadryl etc.) and Dimenhydrinate (motion sickness pills).**

If this education that I am offering saves one life it was worth sharing. If you know of someone who has been given a diagnoses of Alzheimer's or Parkinson's please make sure they have the correct diagnoses. Ask questions of the doctor to see if they even know about this Lewy Body Disease! Now that you have knowledge of LBD you can share it with others.

Hope to see you, if not at your District meeting then in the fall at convention. I will be sharing my knowledge of a different brain disease in the next issue, until then keep your brain stimulated and healthy.

Kathy Couchene  
MAFCE President

## **NOMINATIONS FOR SOUTHEAST DISTRICT DIRECTOR**

Kristine Mueller has submitted an application for the position of Southeast District Director and a letter of support has been placed on file. Kristine is the current President of Lapeer County, has been a member of MAFCE for six years. She worked on past District Meetings and is the 2017 Convention Co-chairman. She has attended six state conventions and as stated in the letter of support she has "love and loyalty for FCE". A vote will take place for the term for 2018-2019 Southeast District Director at their District Meeting May 3, 2017.

## **FEDERATED WOMEN'S INSTITUTES OF ONTARIO INVITES US TO THEIR CONFERENCES**

We have been invited to the Federated Women's institutes of Ontario Provincial Conference June 20-22 in Pembroke at the Best Western Inn & Conference center (1 International Dr. Pembroke, ON. K8A6W5). We are also invited to the ACWW Canada Area Conference immediately following on June 23-25<sup>th</sup>. The theme chosen for the FWIO conference is "Our Journey to 2017-Past, Present and Future" and the theme for ACWW is "Women Helping Women, 80 years and Beyond." The world President Ruth Shanks will be attending both conferences.

The cost to attend the full FWIO conference is \$200.00 (early bird by March 15) and includes Tuesday-Thursday 2 lunches, 2 dinners, book launch, speakers and Entertainment. After March 15<sup>th</sup> the cost is \$225.00.

There are tours to Valley Bio Seed establishment, Bonnechere Caves, Horse Breeding Farm and Hydro Museum. (\$45.00 each and does not include lunch) Registration Chair is Bev Smith. Call her at 613-638-1517 or email her at [beverlys@nrtco.net](mailto:beverlys@nrtco.net). You must book your own hotel by May 20<sup>th</sup>. They have three hotels booked and they are: Best Western (1-800-567-2378), Holiday Inn Express (most expensive) (1-855-629-1990) and Comfort Inn (613-735-1057). Booking code is FWIO/ACWW. All Hotels include a hot Breakfast, refrigerator, microwave and Coffee/tea making.

The ACWW Conference is June 23-25. It starts with a tour of Ottawa. You choose one of the following tours (#1 Discover the Hill and Canada Agriculture and Food Museum \$58.00, #2 Canadian Museum of Nature and Musical Ride Center/Mountie Museum \$79.00, #3 War Museum and Rideau Hall \$73.00). The 23<sup>rd</sup> includes dinner and opening ceremonies. On June 24<sup>th</sup> ACWW President Ruth Shanks will speak, ACWW Discussion Groups will be held, Lunch is included, then another Speaker, a Business meeting, Entertainment or Craft, the Banquet and speaker Sally Armstrong. On June 25<sup>th</sup> there will be an Interfaith Service, another Speaker, Lunch, ACWW discussion groups, a business meeting, another speaker and the closing will be no later than 3:00. The registration cost is Early Bird March 15<sup>th</sup> \$250.00. April 30<sup>th</sup> \$275.00. Registration chairman is Annemarie McDonald contact her at [annemarie4@cogeco.ca](mailto:annemarie4@cogeco.ca)

The cost for the shuttle from the Ottawa airport to the Conference Center is around \$50.00 one way.

If you are interested in either of these or both, please let me know and I can send you the information.

Kathy Couchene

## REGISTRATION FORM FOR 2017 DISTRICT MEETING

Please indicate which District Meeting you wish to attend (can be more than one)

\_\_\_\_\_ West U.P. (Rapid River) \$18.00 members \$21.00 non-members

\_\_\_\_\_ North Central (Chippewa County) \$15.00 everyone

\_\_\_\_\_ East Central (Midland) \$16.00 members \$18.00 non-members

\_\_\_\_\_ Southeast (Lapeer) \$15.00 members \$18.00 non-members

\_\_\_\_\_ Southwest (Marshall) \$12.00 members \$13.00 non-members

NAME \_\_\_\_\_

ADDRESS \_\_\_\_\_ CITY \_\_\_\_\_

COUNTY \_\_\_\_\_ COUNTRY \_\_\_\_\_

PHONE \_\_\_\_\_

AMOUNT ENCLOSED \_\_\_\_\_ MEMBER \_\_\_\_\_ NON-MEMBER \_\_\_\_\_

See following pages for your districts details, directions, and whom to make check payable. If attending more than one, please make copy of this page for each.

## **WEST U.P. MAFCE DISTRICT MEETING**

When: Wednesday, May 10, 2017 at 10 am – 3 pm

Where: Calvary Lutheran Church  
10439 Wisconsin Ave.  
Rapid River, MI 49878

Church's Phone Number: 906-474-9353      Registrars Phone: 906-786-4725

Cost: \$18.00 members    \$21.00 non-members

Make Check Payable to: Town and Country FCE

Mail Registration to: Judith Gereau  
4735 18<sup>th</sup> Road  
Escanaba, MI 49829

Deadline: May 1, 2017

## **NORTH CENTRAL MAFCE DISTRICT MEETING**

When: Thursday, May 11, 2017 at 10 am – 3 pm

Where: Studenbaker's Restaurant  
3583 I-75 Business Spur  
Sault Ste Marie, MI

Cost: \$15.00

Make Check Payable to: Bay Mills Twp. Homemakers

Mail Registration to: Paula E Badder  
4066 S Ranger Rd.  
Brimley, MI 49715

Deadline: May 4, 2017

Directions: Take your favorite way I-75 North to Sault Ste Marie – 1<sup>st</sup> exit (3 Mile), right exit – keep right thru 2 lights passing Walmart, Advance Auto, & Day's Inn signs – turn right into Studenbaker's parking lot. Restaurant is on left – a yellow studebaker is in the front of the restaurant. There is a ramp on both sides of the doors.

## **SOUTHEAST MAFCE DISTRICT MEETING**

When: Wednesday, May 3, 2017 at 10 am – 3 pm

Where: Mayfield Township Hall  
1900 N Saginaw Road  
Lapeer MI 48446  
810-664-0821

Make Check Payable to: LCFCE (Lapeer County FCE)

Cost: \$15.00 members \$18.00 non-members

Mail Registrations to: Grace Noble  
845 Oak Tree Lane  
Lapeer MI 48446

Deadline: April 24, 2017

Contact Person: Marie Haas (810) 441-3815

## **SOUTHWEST MAFCE DISTRICT MEETING**

When: Thursday, May 4, 2017 at 10 am – 3 pm

Where: B. E. Henry Building  
615 S Marshall Avenue  
Marshall MI

Make Checks Payable to: Calhoun County FCE

Cost: \$12.00 members \$13.00 non-members

Mail Registrations to: Jacquie Whidby  
237 N Uldriks  
Battle Creek MI 49037

Deadline: April 24, 2017

Contact Person: Arlona District Director, (517) 630-1483

EAST CENTRAL MAFCE DISTRICT MEETING

When: Friday, May 5, 2017 at 10 am – 3 pm

Where: Our Savior Lutheran Church  
1501 N Saginaw Road  
Midland MI 48640  
989-832-3667

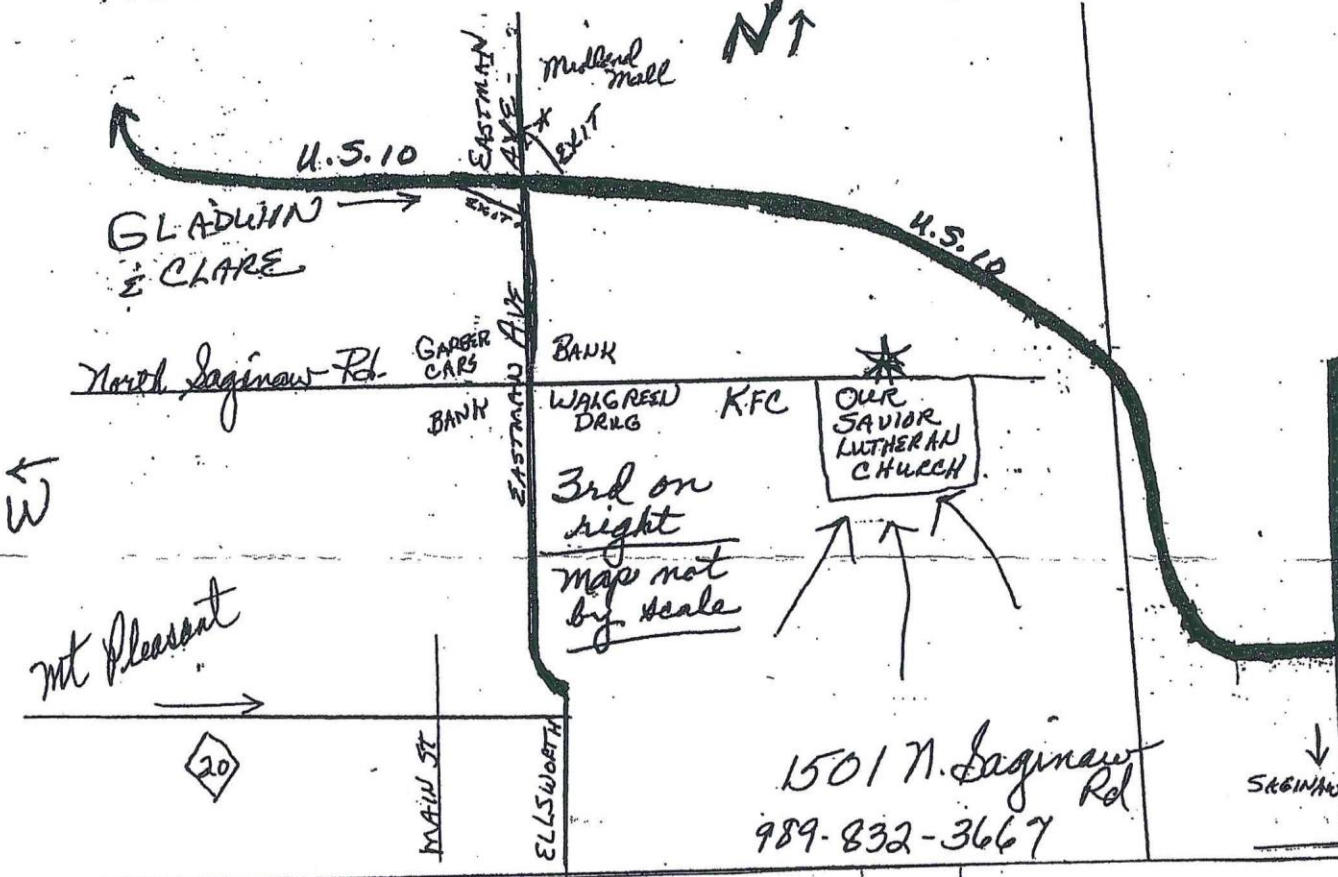
Cost: \$16.00 members \$18.00 non-members

Make Check Payable to: Midland County FCE

Mail Registration to: Barbara Boulton  
2740 Bombay Road  
Midland MI 48642  
989-689-0927

Deadline: April 25, 2017

EAST CENTRAL DISTRICT  
HOSTS: MIDLAND COUNTY



## DISTRICT NEWS

### MIDLAND COUNTY

We are pleased that we will be hosting the East Central District meeting this year. It will be on Friday, May 5<sup>th</sup>. We submitted all the information to our District Director (Mary Lou Wisniewski) who is sending it with the other district information to the newsletter. We are looking forward to seeing everyone within the district as well as the board members at this meeting.

In January we were saddened at the passing of our dear member Etta McLaughlin. In February she would have been 95 years of age. She was a very active member in our Midland County group for over 58 years, held offices in the study group, on our county council, and attended College Week (remember that?), District meetings, Conventions, etc. It was so touching when we went to the funeral home to see her family had used two of her FCE pins along with her other jewelry. They said she talked so much about FCE that it was a big part of her life. We will miss her so much.



We have a couple projects that are on-going. First, we continue to donate kitchen utensils to our local Extension Office classes for low-income mothers. They have classes at seven different sites in the Midland. Second, each winter we provide hats, mittens and scarves to the Midland Shelterhouse. Our donation is close to the 100 count, and is very rewarding.

Submitted by... Carolyn O'Keefe, Midland County President.

### EAST CENTRAL DISTRICT REPORT

Midland County is busy planning our East Central District Meeting. They will be meeting on January 16<sup>th</sup>. All I know at this time is that the meeting will be at the same church Midland used the last two times they hosted this event.

Carolyn O'Keefe reported that basically everything is going well in their county. A couple of the county's oldest members are now unable to attend meetings. One is in a nursing home, while the other is 101 years old and doesn't get out much.

Mecosta County are out of state at this time. Julie is in Texas and Betty in Florida. Julie reported to me that not much goes on in their county. They meet every other month in the summer.

I am not sure what Gratiot County is up to, but I am sure they are keeping busy.

Bay County which has a membership count of 16 members still meets once a month. A few of their members are gone to Florida until April. At our last meeting, we voted to buy a computerized doll for the Can (Child Abuse and Neglect) Council. The object of the doll is to teach young people how much is involved in caring for a baby. It is showing that this program is helping to cut down on teenage pregnancies. Bay County is also busy working on the Character Counts project.

I hope everyone will consider going to the State Convention. The 2017 Convention will be held in Owosso at the Comstock Inn. I have seen the Inn and I am sure everyone will be happy with the sit and its offerings.

On a personal note, I am busy helping my son and his finance (YES, Finally!) plan their wedding. I am so happy for them. They are hoping to get married in May or June, 2017. Oh boy, can't wait. Hope the new year is off to a great start for everyone.



## HILLSDALE COUNTY

Hillsdale County started the 2016 year with 13 members combining into one study group Litchfield Belles/Jefferson Jill's. We are sad to report that three of our members passed away: Elvia Ann Kier a 9-year member of the Litchfield Belles; Anita "Pat" Smith a 30-year member of the Litchfield Belles; and Iva May Butts a 59-year member of the Well Wishers/Jefferson Jill's. Each of these ladies was instrumental in keeping Hillsdale County FCE active. We used many of their suggestions for programs and special events throughout the years.

Hillsdale County was asked to host the May 5<sup>th</sup> South West District meeting. Our theme was "Down Memory Lane". Our tables were decorated individually with antique items. We all enjoyed Joyce Weiss program entitled "Let's Make Sense of it All". Our guest speaker was Hillsdale County Historian Dan Bisher giving us many historical stories of our county. We had fun with the "Game of Chance" and a sing-a-long led by Mary Burns.

During our monthly meetings, we had programs on Renewing Magazines, the History of Valentines, Phone Scams, and review of State Convention activities. We used Hearth Fire #50 pamphlet on Autism and played Autism Bingo which Arlona McCallum had created. In May we traveled to Marshall to Calhoun County's Spring Event. We had our annual picnic and played Bingo for our June meeting. In August we went north of Marshall to Turkeyville for lunch and to view the gardens of Southern Exposure Convention & Wedding Center. After our September business meeting at the MSU office, we traveled to Pittsford to DJ's Restaurant for lunch. We played the "Snoops" game at our November meeting.

We made and donated Lap Robes to the MacRitchie Unit at the Hillsdale Hospital. We made 12 bags of "personal hygiene items" for the Taylor Life Center in Hillsdale. We also collected personal hygiene items for The Salvation Army. At each of our meetings, we collect pennies for "Water for All".

In 2017 our plans are to continue to "learn" and to have "fun" with FCE.

Secretary, Janice Hamilton

## EATON COUNTY

Eaton County started the year 2016 with 17 members, but ended the year with 15 members for the beginning of 2017. Two of our 2016 members are now in foster care. One foster-care member did not year has been a challenging year but with the election of 2016 Co-Presidents to share the monthly meeting duties, and with all the other active members sharing the luncheon and program duties Eaton County FCE had a productive year.

No meetings in JANUARY and FEBRUARY because of winter weather. 2016 Monthly Meetings:

MARCH: Meeting cancelled because of huge winter storm. We planned a luncheon meeting and then a tour of the Crosswalk Teen Center in Charlotte, but maybe we can reschedule this in 2017.

APRIL: Luncheon and then a program called "Understanding Autism and Autism Bingo" presented by Arlona McCallum, FCE Southwest District Director.

MAY: Luncheon at a restaurant in Mulliken, MI, and then a 90<sup>th</sup> birthday celebration at the River Inn AFC to visit our member, Marjorie Southworth, where we conducted our business meeting, and then we were served birthday cake for dessert. Several of our members also attended the May 5<sup>th</sup> Southwest Regional FCE Meeting in Hillsdale County.

JUNE: Luncheon at the home of Mona Ellard and then a tour of a local Charlotte business called, Too Cool T-Shirt Quilts. This business makes special-ordered quilts using T-shirts sent to them from the person ordering the quilt. The business has grown from a home-based business to a national franchise.

No meeting in July and August because of summer vacations. However, two of our members, Myrl and Maida Hawley, attended the 2016 National FCE Conference in Memphis, TN, and the 2016 ACWW Museum International Convention in England during the summer months.

SEPTEMBER: Luncheon and then a program on Presidential Libraries, which focused on the newest Presidential Library of George W Bush in Dallas, TX. One of our members had visited this Presidential Library in May. We also had seven members attend the MAFCE State Conference, Sept. 27-30<sup>th</sup>, at the Island Club & Resort Casino in Harris, MI. We consider this excellent participation for our small FCE group.

OCTOBER: A pizza luncheon served at the Old Eaton County Court House and Museum in downtown Charlotte, followed by a presentation by Frank Spica, who takes care of the St. Vincent DePaul Food Pantry, the local charity we supported during 2016. Members brought to each monthly meeting items that were needed at this local Food Pantry. We contributed mainly paper products which were needed the most. (We have included at the end of our report, a picture of our speaker, along with several of our members and the products which we contributed that month to the Food Pantry).

NOVEMBER: Luncheon and then a detailed presentation by Myrl and Maida Hawley on their trip to England for the 2016 ACWW International Convention, which is held every three years. Myrl and Maida have attended many of these ACWW International Conventions over the years.

DEEMBER: Our annual Christmas Luncheon and planning for 2017 at the Riverside Restaurant in Bellevue, MI. (It has been decided that three members will work as a team for two consecutive months on planning our luncheons and arranging for programs). At our Christmas Luncheon spouses are welcome, cards and small gifts are exchanged, and everyone is celebrating the Christmas season.

We are looking forward to the year ahead with all our plans in place. Some of our programs coming up are: *Crosswalk Teen Center (our charity for the year)*; *A Lesson from National's Hearth Fire Series*; *Historical Eaton County Paper Project*; *Three More Lessons from Hearthfire*; and *a Make It Take It Day*. Our final gathering of 2017 will be our traditional Christmas outing.



A picture taken in October, 2016 at the Old Eaton County Court House, showing several Eaton County FCE members and our speaker at that meeting, Frank Spica. The picture also displays some of the paper products we donated at our monthly meetings to the St. Vincent DePaul Food Pantry in Charlotte, MI.

## **VICE-PRESIDENT OF EDUCATION REPORT**

2017 has arrived and I am getting to work on our District Meetings. In this issue, you will find the information for your district meeting. Be sure to sign up by the deadline to insure your spot. Bring a friend or two to districts to get them interested in our fine organization. Last year we had 167 attend our meetings. Let's try to get that number up even higher. Remember that you are not restricted to just attending your district. You may attend ANY district meeting if you are willing to pay the registration cost. The only restriction has to do with voting. You may only vote in your district.

It is also time to get your accumulated educational reports sent to me. I have already received a few county reports. The state board wants to know what all of you are doing in your county so we can share that information with others. I need these as soon as possible so I can compile and send the info to our president. Everything that your club has participated in needs a report form. Send these to your county President so she can send them all to me.

Also, our state president has asked that I inform you ahead of time what the Hearthfire challenge will be for this year's convention. I have chosen Hearthfire #35 "Here's to a Healthy Heart". I will be giving a quiz at district meeting to test your knowledge so your club may want to have a lesson on that issue before attending the district meeting. If you need copies of the issue, they can be purchased online from NAFCE.

I am also working on the state convention committee. This is going to be a great convention in a lovely community in the middle of the lower peninsula. The venue is quaint and I think you will all enjoy it. We really need to increase our numbers attending convention. This is our BIG SHINDIG, our BIG TO DO, our TOP EVENT. Come on members.....make an effort to join us at convention. You won't regret it.

I also ask that each district find a place for the traveling members to stay while they travel around the state. There are 3 meetings in a row in the lower peninsula and 2 to the north. We travel to the district, hold the meeting, then travel to the next district where dinner is provided and a place to spend the night before they start all over again. This generosity is greatly appreciated. If your county is hosting, don't hesitate to open your home to a state board member or two.

See you all in May when I come to visit your district.

Joyce Weiss

MAFCE Vice President of Education

## **MEMBERSHIP NOTE**

The numbers are in for 2017 and we are at 250 members (down about 50 members from 2016). Membership can be submitted at any time so if you know someone that is interested get them to sign on the dotted line and send to the State Treasurer. Get someone to attend your District Meeting and that might be the event to interest them in our organization. Be sure to include your name as recruiter and you will receive a special pin from National plus you will be entered for a \$100 reimbursement on your 2018 State Convention registration.

2016

MAFCE END OF YEAR STATEMENT

		<u>BUDGETED</u>	<u>ACTUAL</u>
Checking Account 12/31/15		\$2,000.00	\$434.99
Savings Account @ Credit Union		\$20.10	\$20.09
High Yield Savings Account		\$7,528.00	\$5,025.60
Foundation Money	\$4,722.40		
	<b>TOTAL</b>	<b>\$9,548.10</b>	<b>\$5,480.68</b>

**INCOME**

Interest		\$0.50	\$4.80
Dues based on 325			
5 x 40.00 (Family)		\$200.00	\$450.00
155 x 26.00 (Regular)		\$4,030.00	\$4,258.00
155 x 22.50 (Senior-over 80)		\$2,587.50	\$2,117.00
FCE Sales		\$50.00	\$549.95
Water for All		\$500.00	\$388.71
Coins for Friendship		\$200.00	\$131.36
Intrepid Fallen Heroes Fund		\$300.00	\$229.57
Convention			
Registration		\$10,875.00	\$13,570.00
Tour		\$0.00	\$1,428.00
Trade Tables		\$30.00	\$30.00
Game of Chance		\$500.00	\$476.00
Cash Raffle		\$500.00	\$605.00
Mystery Night		\$0.00	\$59.00
District Meetings		\$113.00	\$169.00
Fund Raiser		\$3,500.00	\$3,905.00
Donations from Members		\$0.00	\$1,762.06
Memorials		<u>\$0.00</u>	<u>\$625.00</u>
<b>TOTAL INCOME</b>		<b>\$23,386.00</b>	<b>\$30,758.45</b>

**TOTAL ASSETS**

**\$32,934.10**                      **\$36,239.13**

**EXPENSES**

NAFCE Dues			
5 x 30.00 (Family)		\$150.00	\$330.00
155 x 20.00 (Regular)		\$3,100.00	\$3,187.50
115 x 16.50 (Senior - over 80)		\$1,897.50	\$1,468.50
Water for All (in/out acct)		\$500.00	\$388.71
Coins for Friendship (in/out acct)		\$200.00	\$131.36
Intrepid Fallen Heroes Fund		\$300.00	\$229.36
NAFCE Conference		\$1,400.00	\$0.00
District Meetings		\$800.00	\$302.00
District Directors/mileage (5@\$50)		\$250.00	\$0.00
Board Meetings		\$2,000.00	\$1,072.80
Board Mileage		\$1,200.00	\$1,449.87
Packets & Resource Materials	12	\$100.00	\$0.00

Newspaper - Cost of Printing	\$750.00	\$826.05	
Cost of Mailing	\$750.00	\$797.26	
Membership Outreach (recruiter)	\$100.00	\$150.00	
State Convention Contingency Fund	\$500.00	\$100.00	
State Convention Bd Ex (6x250)	\$1,500.00	\$1,500.00	
State Convention Ex Bd (5x250)	\$1,250.00	\$1,250.00	
State Convention Scholarships (10x100)	\$1,000.00	\$1,000.00	
State Convention 1st Timers (up to \$100 ea)	\$700.00	\$700.02	
State Convention	\$10,875.00	\$11,692.07	
International Programs/Mailings	\$25.00	\$0.00	
Supplies & Recognition	\$50.00	\$64.20	
Historian	\$50.00	\$0.00	
Misc Organization Operating	\$50.00	\$0.00	
President (supplies, postage, phone)	\$150.00	\$100.79	
Past President (ditto)	\$50.00	\$0.00	
Vice President (ditto)	\$50.00	\$83.47	
Secretary (ditto)	\$50.00	\$0.00	
Treasurer (ditto)	\$150.00	\$20.99	
District Directors Ex (5x25)	\$125.00	\$0.00	
Editor (ditto)	\$25.00	\$0.00	
Treasurer Bonding	\$90.00	\$90.00	
Misc. Committee Expense	\$25.00	\$0.00	
Non Profit Fees	\$20.00	\$20.00	
Tax Preparation/Audit	\$75.00	\$25.00	
Finance Committee	\$100.00	\$0.00	
ACWW Dues	\$105.00	\$99.00	
CWC Dues	\$50.00	\$50.00	
International/Canada Ex (2 chairpersons)	\$50.00	\$0.00	
Fund Raiser	\$1,050.00	\$1,050.00	
Foundation Money for Education	\$4,208.66		
Web Site Costs	\$60.00	\$103.74	
Educational Displays	\$200.00	\$120.00	
Program Development (ex Hearth Fire)	\$200.00	\$140.00	
Character Counts	<u>\$150.00</u>	\$150.00	
TOTAL EXPENSES	\$32,272.50	\$28,692.69	
	<b>TOTAL ASSETS</b>	\$32,934.10	\$36,239.13
	<b>TOTAL EXPENSES</b>	<u>\$32,272.50</u>	<u>\$28,692.69</u>
	<b>CONTINGENCY FUND</b>	\$661.60	\$7,546.44
TOTAL FUNDS AVAILABLE 1/1/16	\$5,480.68	CHECKING ACCOUNT 12/31/16	\$4,490.59
TOTAL INCOME	\$30,758.45	HIGH YIELD SAVINGS 12/31/16	\$3,035.68
TOTAL EXPENSES	<u>\$28,692.69</u>	SAVINGS ACCOUNT 12/31/16	<u>\$20.17</u>
TOTAL FUNDS AVAILABLE 12/31/16	<u>\$7,546.44</u>	TOTAL FUNDS AVAILABLE 12/31/16	<u>\$7,546.44</u>

## 2017 STATE BOARD

### PRESIDENT

Kathy Couchene  
5240 17<sup>th</sup> Road  
Escanaba MI 49829  
906-786-3876

[davidcouchene@charter.net](mailto:davidcouchene@charter.net)

### VICE PRESIDENT OF EDUCATION

Joyce Weiss  
2283 E North Union  
Bay City MI 48706  
989-415-0533

[Juicem2000@hotmail.com](mailto:Juicem2000@hotmail.com)

### TREASURER/MEMBERSHIP CHAIRMAN

Faye Lipinski  
51 E Markel Road  
Munger MI 48747  
989-659-2567

[johnlipi@tds.net](mailto:johnlipi@tds.net)

### NORTH CENTRAL DISTRICT

Paula Badder  
4066 S Ranger Road  
Brimley MI 49715  
906-437-5374

[pebadder@jamadots.com](mailto:pebadder@jamadots.com)

### SOUTHEAST DISTRICT

Judy Lamphere  
2658 Porcupine Trail  
Lapeer MI 48446  
810-664-6431

### EDITOR

Sharon Rajewski  
730 S Huron Rd  
Linwood MI 48634  
989-697-3460

[serajewski@charter.net](mailto:serajewski@charter.net)

### APPOINTED HISTORIAN:

Renee Smith  
345 S Olson  
Sumner MI 48889  
989-875-4567

### PAST PRESIDENT

Lorraine Rice  
105 Country Meadow Lane  
Bay City MI 48706  
989-686-1616

### SECRETARY

June Owen  
617 W Stewart  
Gaylord MI 49735  
989-619-2764

[wjowen@voyager.net](mailto:wjowen@voyager.net)

### WEST U.P. DISTRICT DIRECTOR

Nancy Berta  
307 Silver Creek Road  
Marquette MI 49855  
906-249-3097  
nrb815@yahoo.com

### EAST CENTRAL DISTRICT

Mary Lou Wisniewski  
7187 N Portsmouth Road  
Saginaw MI 48601  
989-893-2086

[cherry\\_bmj@hotmail.com](mailto:cherry_bmj@hotmail.com)

### SOUTHWEST DISTRICT

Arlona McCallum  
18440 29 ½ Mile Road  
Springport MI 49284  
517-857-2531

[arlona@springcom.com](mailto:arlona@springcom.com)

REMINDER: If you are interested in running for a Board position, contact the nominating committee for details.

### APPOINTED WEBMASTER(see Editor)

Sharon Rajewski  
730 S Huron Rd  
Linwood MI 48634  
[www.MAFCE.org](http://www.MAFCE.org)

REMINDER: If you are interested in being appointed for a state committee chair, contact your State President. She would love to hear from you.

## **2017 STATE COMMITTEE CHAIRS**

### **BUDGET COMMITTEE CHAIR CHAIR**

Faye Lipinski  
51 E Markel Road  
Munger MI 48747  
989-659-2567  
[johnlipi@tds.net](mailto:johnlipi@tds.net)

### **CHARACTER COUNTS COMMITTEE**

Judith Gereau  
4735 18<sup>th</sup> Road  
Escanaba MI 49829-9552  
906-786-4725

### **CULTURAL ARTS COMMITTEE CHAIR**

Nancy Thomas  
3100 N Morse Road  
Fountain MI 49410  
231-462-3146

### **EDUCATION COMMITTEE CHAIR**

Joyce Weiss  
2283 E North Union Road  
Bay City MI 48706  
989-415-0533  
[Juicem2000@hotmail.com](mailto:Juicem2000@hotmail.com)

### **INTERNATIONAL COMMITTEE CHAIR U.P. LOWER MI**

Paula Badder  
4066 S Ranger Road  
Brimley MI 49715  
906-437\*5374  
[pebadder@jamadots.com](mailto:pebadder@jamadots.com)

### **INTERNATIONAL COMM CHAIR**

Marie Haas  
72 Edgewood Drive  
Lapeer MI 48446  
810-356-5127

### **NOMINATIONS COMMITTEE CHAIR**

Lorraine Rice  
105 Country Meadows Lane  
Bay City MI 48706  
989-686-1616

### **SCHOLARSHIP COMMITTEE CHAIR**

Nancy Anderson  
8647 Schaawe Lake 24<sup>th</sup> Lane  
Rapid River MI 49878

### **NATIONAL FCE Headquarters**

**Suite 106**

**73 Cavalier Blvd.**

**Florence KY 41042**

859-525-6401

Fax 859-525-6496

Email [nafcehq@fuse.net](mailto:nafcehq@fuse.net)

Website [www.nafce.org](http://www.nafce.org)

**Michigan Association  
For Family and Community Education  
Non-Profit Organization  
51 E Markel Road  
Munger MI 48747**

**NON PROFIT ORG  
US POSTAGE  
PAID  
WAM**



**2017 DATES TO REMEMBER**

Feb 15 – Applications for District Director due to State President

July 1 – Application for State Board due to President

July 15 – Applications for State Scholarships due

50 Members due to President

Aug 1 – Heart of FCE due to President

Oct 4-6 – MAFCE State Convention at Comstock Inn and Convention Center, Owasso

Nov 1 – FCE newsletter deadline

County Newsletter rotation for reports: Feb 1 – deadline for Southwest and East Central Districts

June 1 – deadline for North Central and West U.P. Districts

Nov 1 – deadline for Southeast District